

Zebra Crossing for Stoke Hill Junior School

Report of the Director of Climate Change, Environment and Transport

Please note that the following recommendations are subject to consideration and determination by the Committee before taking effect.

1) Recommendation

That the Committee be asked to:

- (a) approve the construction for the proposed Zebra Crossing on Stoke Hill shown on drawing in Appendix 1 at an estimated cost of £150,000; and
- (b) that the Director of Climate Change, Environment and Transport be given delegated powers, in consultation with the Chair of HATOC and the Local Member, to make minor amendments to the scheme details.

2) Introduction

The report seeks approval to construct a new Zebra Crossing to support the safety and active travel needs of the students attending Stoke Hill Junior School. The site has been the location of numerous 'failure to stop' incidents and the last School Crossing Patrol was twice clipped by motor vehicles. The Patrol retired in 2021 and despite the efforts of DCC and wider school community to recruit, no applications have been received.

3) Proposal

The proposed scheme on Plan J21014/04 indicated in Appendix 1 incorporates a new Zebra Crossing outside Stoke Hill Junior school on Stoke Hill between Lyncombe Close and Mincinglake Road.

It includes the removal of the old informal crossing point, the addition of High Friction Surface on approaches to the proposed Zebra and mains powered flashing 'wigwag' lights. The site has issues with the solar powered flashing WigWag units caused by overhanging vegetation.

To ensure good visibility at the Zebra Crossing, the parking bays will be reconfigured, and 2 car parking spaces will be removed.

The road width at the Zebra Crossing would be reduced whilst the footway width on the school side would be increased.

Improvements to streetlighting would be made, and lining and markings refreshed.

The proposed Zebra Crossing would be the first road safety feature motorists encounter when heading towards Exeter from the Tiverton direction, alerting motorists of the presence of pedestrians as they enter the city and a reminder to reduce speed before they drive past both the junior and infant schools.

These combined measures will alleviate safety issues frequently raised by previous Patrols, the school, the School Crossing Patrol supervisor, and parents at this busy crossing site.

Subject to scheme approval, it is intended that construction takes place over the summer holiday period, to be ready for use by the start of school term in September 2024.

4) Options/Alternatives

At the feasibility stage other locations to the left and right of the existing, informal crossing point were considered, including keeping the current location of the crossing point.

To best comply with Safe Stopping Distances and to make the facility more likely to be used by pedestrians traveling from Mincinglake Road direction, the option to move the crossing site towards Mincinglake Road, directly opposite the school gate was chosen.

5) Consultations

Consultation has been undertaken by the Local Member, and the school and residents have received the plan attached in Appendix 1.

One comment was received regarding illumination from proposed beacons, this impact will be mitigated with cowling shrouds and/or directional modern LED beacons.

The proposal of a new crossing here will be subject to a public notice and advertisement.

6) Strategic Plan

The proposed scheme is well aligned with the priorities of the Council's Strategic Plan 2021– 2025. The table below summarises how this scheme proposal would impact upon individual Strategic Plan actions according to a seven-point scale, whereby +3 represents a large positive impact and -3 represents a large negative impact.

Strategic Plan Priority	Strategic Plan Action	Impact
Respond to the Climate Emergency	Support a green recovery from COVID-19.	+1 (slight positive)
	Prioritise sustainable travel and transport.	+3 (large positive)
	Encourage sustainable lifestyles.	+3 (large positive)
Be Ambitious for Children and Young People	Ensure children and young people have the best possible start in life, good health and emotional wellbeing.	+2 (moderate positive)
Investing in Devon's economic recovery	Secure investment in transport infrastructure.	+1 (slight positive)
	Maintain and, where necessary, improve our highway network and improve sustainable transport options.	+2 (moderate positive)
Tackle poverty and inequality	Promote services that increase resilience, self-reliance and independence.	+1 (slight positive)
Improve health and wellbeing	Give people greater opportunities for walking and cycling to increase their physical activity.	+2 (moderate positive)
Helping communities to be safe, connected and resilient	Enable a range of transport options, including public transport.	+2 (moderate positive)

7) Financial Considerations

The estimated cost of the scheme is £150,000. It is proposed that the scheme will be funded through the Market and Coastal Towns School Safety Scheme element of the Local Transport Plan and Transport Capital Programme.

8) Legal Considerations

To introduce a new or amended pedestrian crossing a public notice will be required to be advertised in accordance with Section 23 of The Road Traffic Regulation Act.

Modifications to existing waiting restrictions will require changes to a Traffic Regulation Order. When making a Traffic Regulation Order it is the County Council's responsibility to ensure that all relevant legislation is complied with. This includes Section 122 of the Road Traffic Regulation Act 1984 that states that it is the duty of a local authority, so far as practicable, to secure the expeditious, convenient, and safe movement of traffic and provision of parking facilities.

9) Environmental Impact Considerations (Including Climate Change, Sustainability and Socio-economic)

In support of the Devon Strategic Plan 2021-25, the Devon Carbon Plan identifies that reducing the need to travel and shifting to sustainable transport options, such as walking, are important ways to tackle transport emissions and reduce greenhouse gas emissions particularly for short distance journeys.

By promoting sustainable alternatives to travel by car, the proposal will have a minor but positive effect on vehicle emissions and the environment.

10) Equality Considerations

Where relevant, in coming to a decision the Equality Act 2010 Public Sector Equality Duty requires decision makers to give due regard to the need to:

- eliminate discrimination, harassment, victimisation and any other prohibited conduct;
- advance equality by encouraging participation, removing disadvantage, taking account of disabilities and meeting people's needs; and
- foster good relations between people by tackling prejudice and promoting understanding

in relation to the protected characteristics (age, disability, gender reassignment, marriage and civil partnership (for employment), pregnancy and maternity, race/ethnicity, religion or belief, sex and sexual orientation).

No new polices are being recommended in this report and therefore an individual Equality Impact and Needs Assessment for the scheme is not considered necessary. The proposed scheme helps to enable pedestrians with a wide range of abilities and confidence levels to access the school.

11) Risk Management Considerations

A controlled Zebra Crossing facility will have ongoing maintenance costs for Devon County Council; however, providing a controlled crossing will remove the requirement to fund a School Crossing Patrol operative will also deliver revenue cost savings.

The scheme has been subject to the road safety audit process. Any negative impacts associated with the scheme, have been mitigated locally if possible. These assessments are a formal, independent process for assessing risks to different road users during the development and post implementation of schemes.

12) Reasons for Recommendations

It is recommended that the scheme be approved for construction to both support school safety and to promote sustainable and healthy travel choices.

Meg Booth

Director of Climate Change, Environment and Transport

Electoral Division: Duryard & Pennsylvania

Local Government Act 1972: List of background papers

Background Paper Nil

Contact for enquiries:

Name: Matthew McDonald

Telephone: 01392 383383

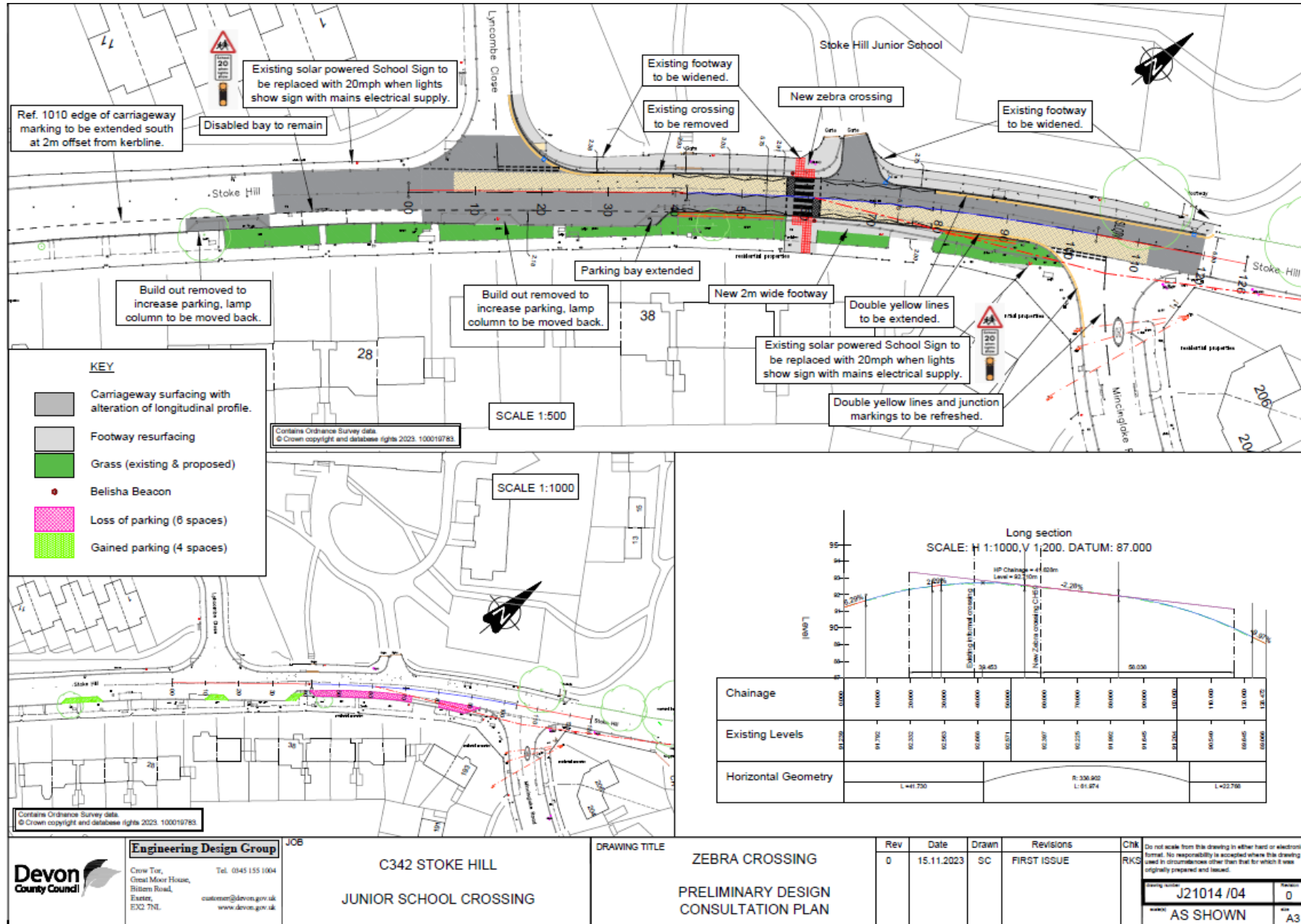
Address: Road Safety, Room 120, County Hall

mm151223exh

sc/cr/Zebra Crossing for Stoke Hill Junior School

03 150124

Appendix 1 to CET/24/7
Drawing J21014/04



Devon County Council
Engineering Design Group
Crow Tor, Great Moor House, Broom Road, Exeter, EX2 7NL
Tel: 0345 155 1004
customers@devon.gov.uk
www.devon.gov.uk

JOB
C342 STOKE HILL
JUNIOR SCHOOL CROSSING

DRAWING TITLE
ZEBRA CROSSING
PRELIMINARY DESIGN CONSULTATION PLAN

Rev	Date	Drawn	Revisions
0	15.11.2023	SC	FIRST ISSUE

CHK	Drawn	Revisions
RKS	AS SHOWN	0

Do not scale from this drawing in either hand or electronic format. No responsibility is accepted where this drawing is used in circumstances other than that for which it was originally prepared and issued.